

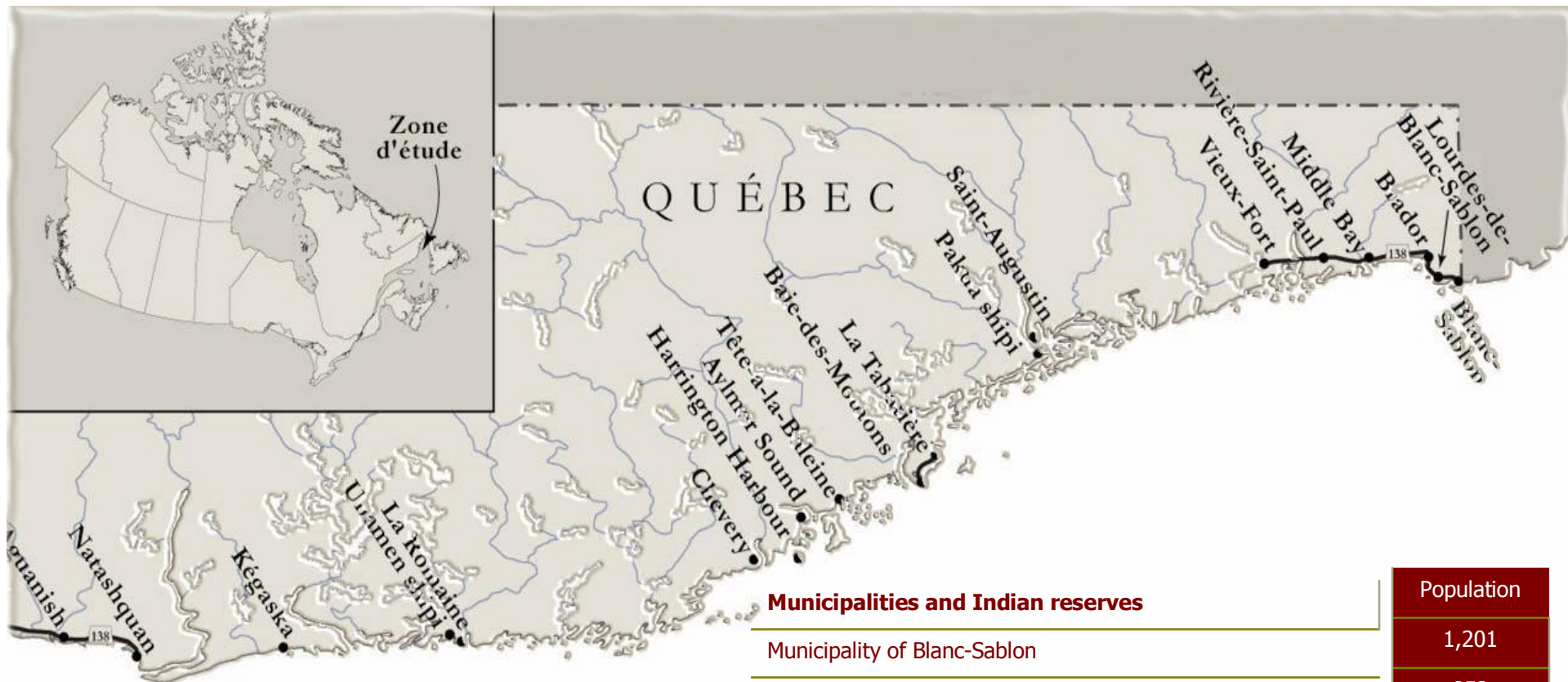
# Networking and Partnership Initiative (NPI)

Presented by:

**Kimberly Buffitt, Coasters Association Inc**

March 15<sup>th</sup>, 2011





## The Lower North Shore

There are 14 villages and 2 Indian reserves with a total population of 5,607.

### Municipalities and Indian reserves

Municipality of Blanc-Sablon

Municipality of Bonne-Espérance

Municipality of Saint-Augustin

Municipality of Gros-Mécatina

Municipality of Côte-Nord-du-Golfe-Saint-Laurent

Indian reserves (Pakua Shipi, Unamen Shipi)

### Population

1,201

852

626

573

1,183

1,172

**Municipality of Blanc-Sablon** : Blanc-Sablon, Lourdes-de-Blanc-Sablon, Brador

**Municipality of Bonne-Espérance** : Middle Bay, St-Paul's River, Old Fort

**Municipality of Gros-Mécatina** : La Tabatière, Mutton Bay

**Municipality of St-Augustin** : St-Augustin

**Municipality of Côte-Nord-du-Golfe-Saint-Laurent** : Tête-à-la-Baleine, Harrington Harbour, Chevery, La Romaine, Kégaska

# Coasters Association and the Lower North Shore Coalition for Health (LNSCH)

- **Coasters Association** formed in May of 1989 in St. Augustine and February 1991 in La Tabatiere. 22<sup>nd</sup> anniversary
- The **Lower North Shore Coalition for Health** is a network table of the CA. Members include:
  - Coasters Association,
  - Centre de Sante et des Services Sociaux de la Basse Cote Nord,
  - Commission Scolaire du Littoral,
  - Council of Mayors,
  - Quebec Labrador Foundation,
  - Community Employability Development Economic Committee,
  - Surete du Quebec, and
  - Local Development Center

# The Strengths of the Network

The LNSCH is made up of people who:

- Represent organizations, institutions and municipalities
- Have decision making capabilities within their respective bodies
- Have a strong understanding of challenges in H & SS on the Lower North Shore
- Believe that the partnerships created and nurtured through LNSCH will bring increased access to H & SS on the territory in English
- Have an open mind and like to think outside the box to find solutions
- Are committed to creating a sustainable Network and improving access to H & SS on the territory

## Issues and concerns of population



**Phase I:** a survey of all the communities on the LNS.  
Five (5) priorities were established based on the results:

1. Youth and Children
2. Drug and Alcohol Abuse
3. Women's Issues
4. Wait times and Post Care
5. Transportation and Lodging


Strategies were developed to answer to these priorities



# The Strategic Plan

A decorative graphic consisting of a vertical line on the left and a horizontal line below the title, intersecting at the top-left corner of the text area.

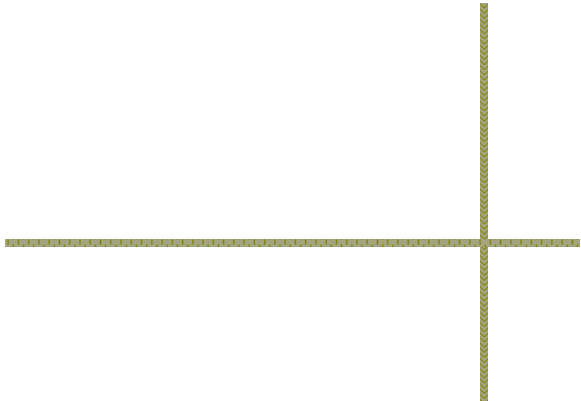
The Strategic Plan gave partners a path and answered

- Who are we, and who is in charge of certain initiatives undertaken ?
  - What are we doing to improve H & SS ?
  - When will activities take place ?
  - Where are we going, and where will initiatives take place ?
  - Why are we here and, why are we undertaking certain activities ?
- 
- A decorative graphic consisting of a vertical line on the right and a horizontal line below the list, intersecting at the bottom-right corner of the text area.

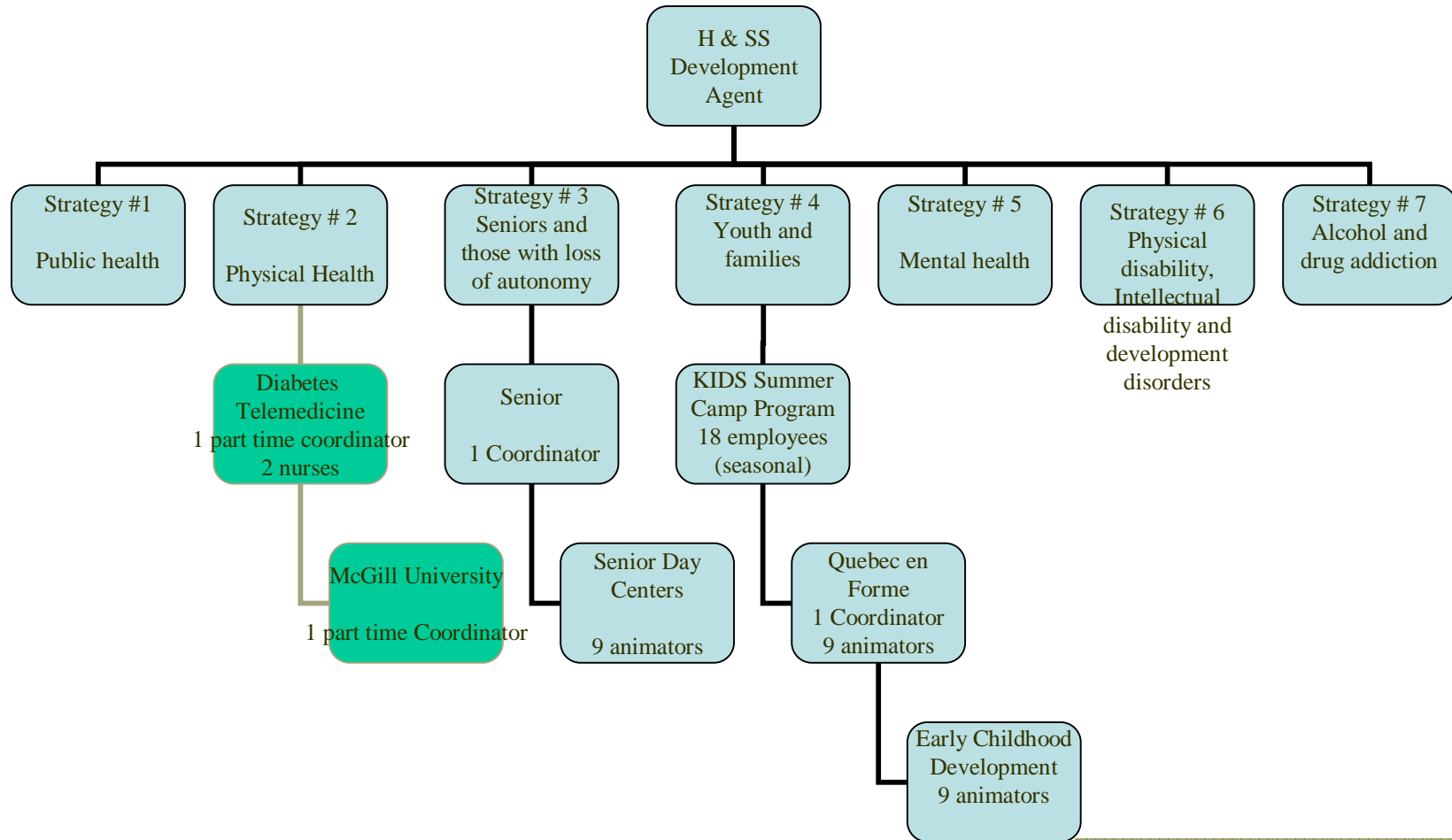
## Issues and concerns of population

A decorative graphic consisting of a vertical and a horizontal line intersecting at the top left of the slide.

**Phase 2:** Focus group sessions in every municipality to prioritize actions for the next four years:

1. Public health
  2. Physical health
  3. Seniors and those with loss of autonomy
  4. Youth and families
  5. Mental health
  6. Physical disability, Intellectual disability and development disorders
  7. Alcohol and drug addiction
- 
- A decorative graphic consisting of a vertical and a horizontal line intersecting at the bottom right of the slide.

# Staffing of Health Initiatives

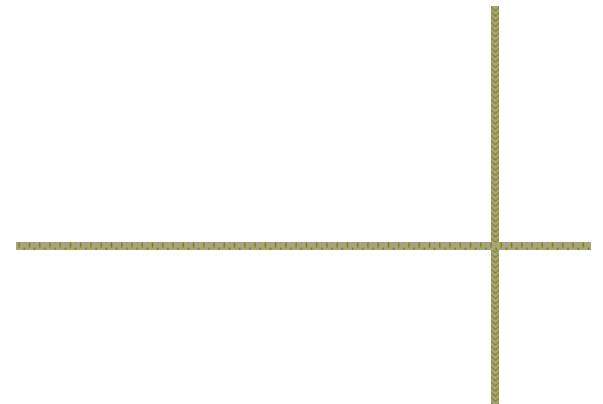




# The Experience

A decorative graphic consisting of a vertical line and a horizontal line intersecting at the top left corner of the slide.

- Creating and maintaining the LNSCH has been challenging and rewarding. We have extremely busy members and it is hard to arrange meetings that suit everybody but when a meeting takes place things are decided and move very quickly.
- To work with the population and see the improvements brought forth due to the HSSNPI Program is amazing and I thank all the people who made it possible.





# For More Information

Contact:

Kimberly Buffitt

Health and Social Service Development Agent

Coasters Association Inc

P.O. Box 10

St. Paul's River, Quebec

G0G 2P0

E-Mail: [hssnpi@globetrotter.net](mailto:hssnpi@globetrotter.net)

Tel: (418) 379 2006 ext #226

Fax: (418) 379 2621



Questions and comments

# The Lower North Shore of Quebec

